

MONTHLY MEMBERSHIP PROGRESS REPORT

District 3 NW

Results as of: 5/31/2020

GMT:

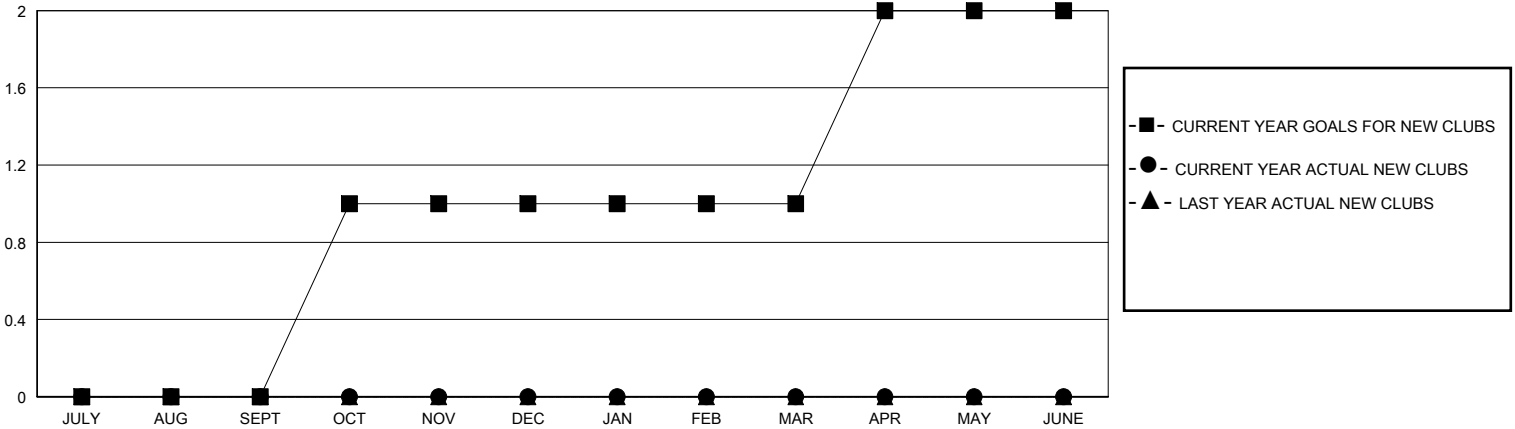
LOCATION OKLAHOMA

GMT CA

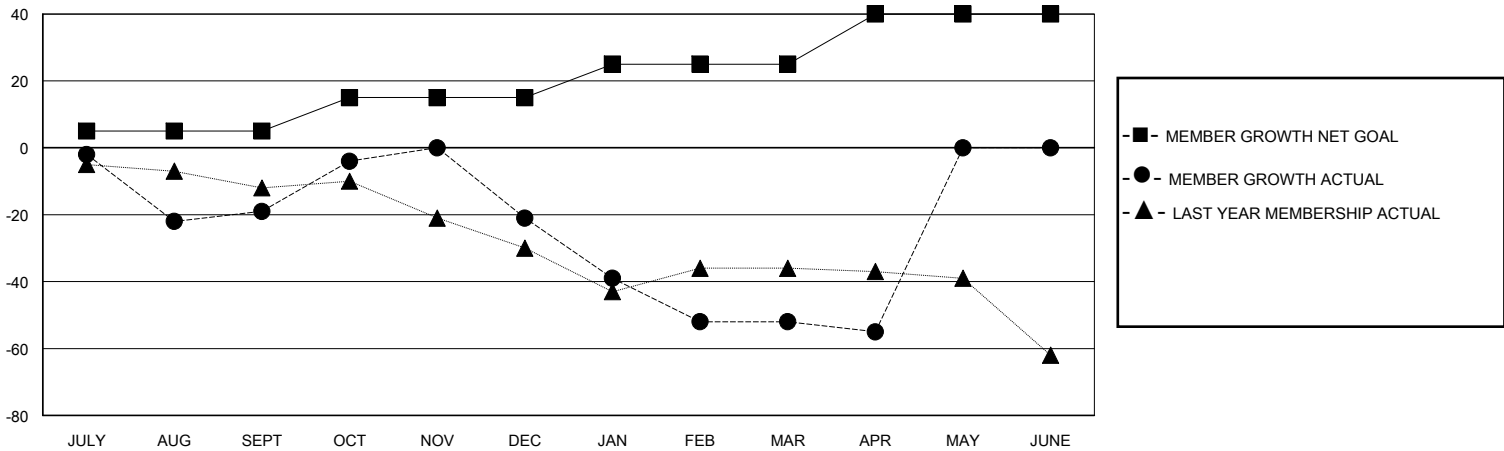
| Clubs | | | |
|-----------------------|---------------|-----------|---------------|
| RESULTS FOR 2019-2020 | | | |
| QUARTER | NEW CLUB GOAL | NEW CLUBS | DROPPED CLUBS |
| JULY/AUG/SEPT | 0 | 0 | 0 |
| OCT/NOV/DEC | 1 | 0 | 1 |
| JAN/FEB/MAR | 0 | 0 | 0 |
| APR/MAY/JUNE | 1 | 0 | 0 |

| Members | | | |
|-----------------------|------------------------|----------------------|--|
| RESULTS FOR 2019-2020 | | | |
| QUARTER | MEMBER GROWTH NET GOAL | MEMBER GROWTH ACTUAL | DROPPED MEMBERS ACTUAL (including transfers) |
| JULY/AUG/SEPT | 5 | 29 | 45 |
| OCT/NOV/DEC | 10 | 39 | 40 |
| JAN/FEB/MAR | 10 | 26 | 50 |
| APR/MAY/JUNE | 15 | 0 | 3 |

GOALS AND ACTUAL NEW CLUBS CUMULATIVE



GOALS AND ACTUAL MEMBERS CUMULATIVE



| | | | |
|-------------------------|--|---|------------------------------------|
| DROPPED CLUBS: 1 | 24 CLUBS OF 45 ADDED 1 OR MORE NEW MEMBERS | GENDER DISTRIBUTION | |
| | | MALE 925 (76.01%) | FEMALE 292 (23.99%) |
| DROPPED MEMBERS | | CLICK HERE FOR CUMULATIVE MEMBERSHIP DATA | TOTAL FAMILY UNIT MEMBERS 138 |
| DECEASED 17 | CLUB CANCELLED 7 | | FAMILY MEMBERS PAYING HALF DUES 70 |
| OTHER 114 | TOTAL 138 | | |